



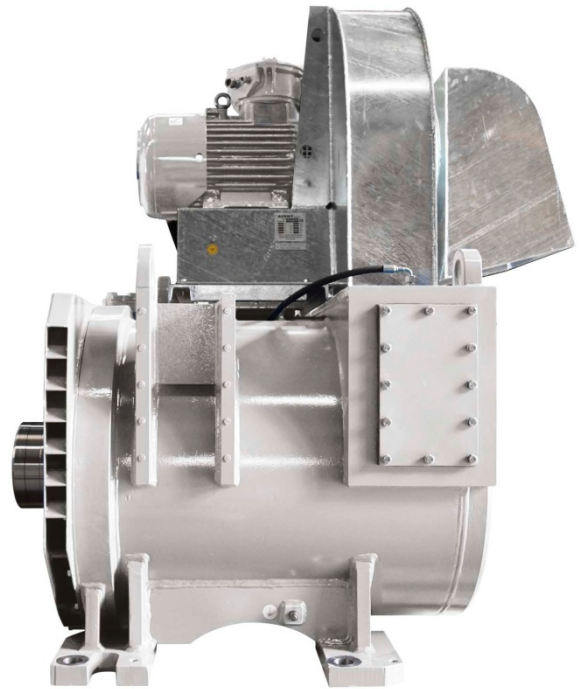
AC Drilling motors

AC Drilling Motors

BREUER has successfully served AC Drilling Equipment for more than 15 years with in excess of 1000 drilling motors in operation. The power range for TopDrive-, Mudpump-, rotary table and Drawwork motors is from 400hp up to 2200hp. BREUER AC drilling solutions offers a high degree of customization, easy installation, excellent torque values and absolute high robustness.

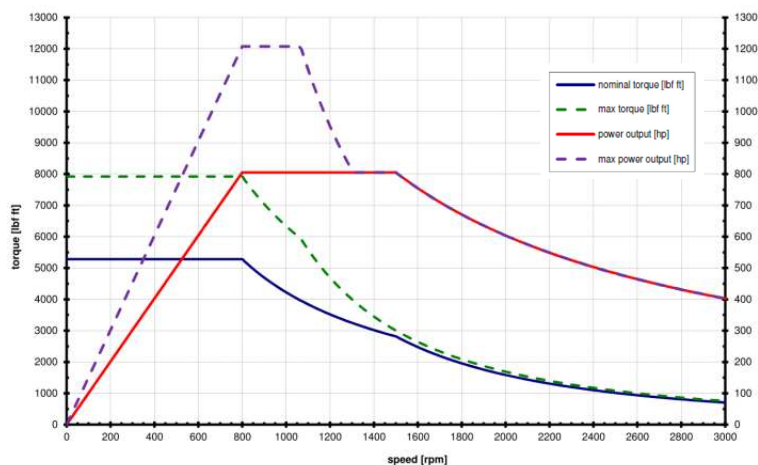
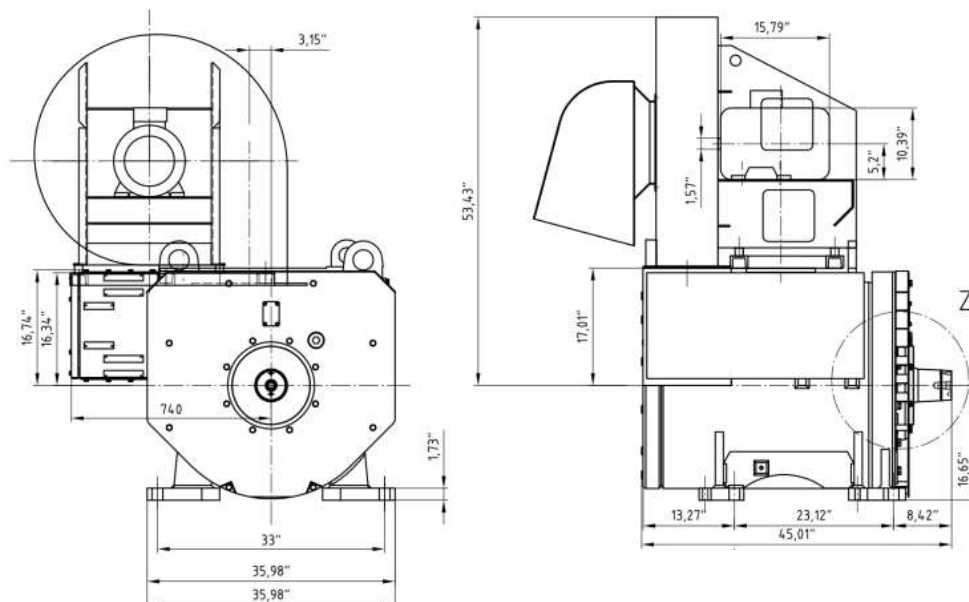
Standard Features

- CE, ATEX, IECEx, UL, CSA certified motors
- 6-pole stator form wound winding
- Copper alloy rotor bars
- Class H insulation, Mica Kapton system
- 30CrNiMo8V steel shaft
- Insulated non drive end bearing
- Stainless steel IP56 terminal box right or left side
- IP44 motor protection
- Max. speed 3000rpm
- 10x platinum RTD and 6x PTC in winding and bearing (redundancy)
- Ambient temperature -40°C up to +55°C without derating
- Tape heater 6x 100W (redundancy)
- Blower motor can be VFD controlled
- LowNoise design
- Blower: 85dBA-1m
- Interchangeable footprint, shaft and hub to 5GE752
- "increased safety" Ex 2G EEx e II T3
- suitable for Mudpump, Drawwork and Rotary Table duty (also belt driven possible)
- Grease for <50.000h of operation in optimal condition
- ATEX motor certification without named VFD supplier
- SKF Bearings for >50.000h
- preparation for Vibration monitoring
- offshore painted, 3 layer, color free



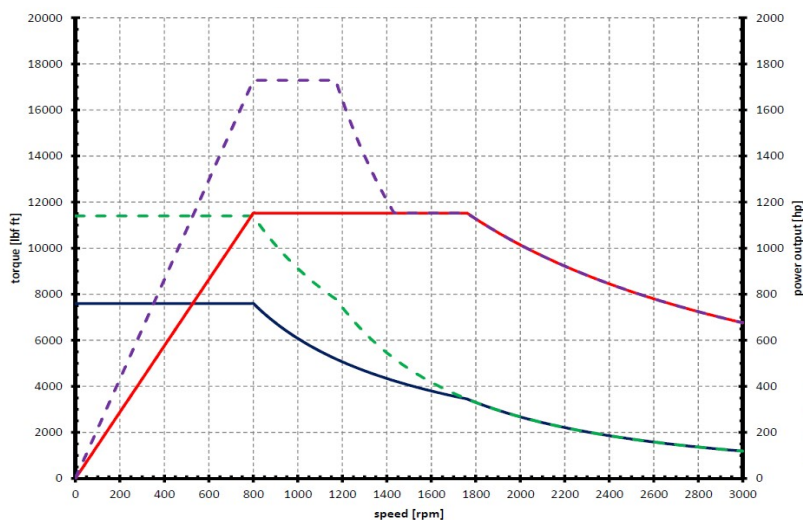
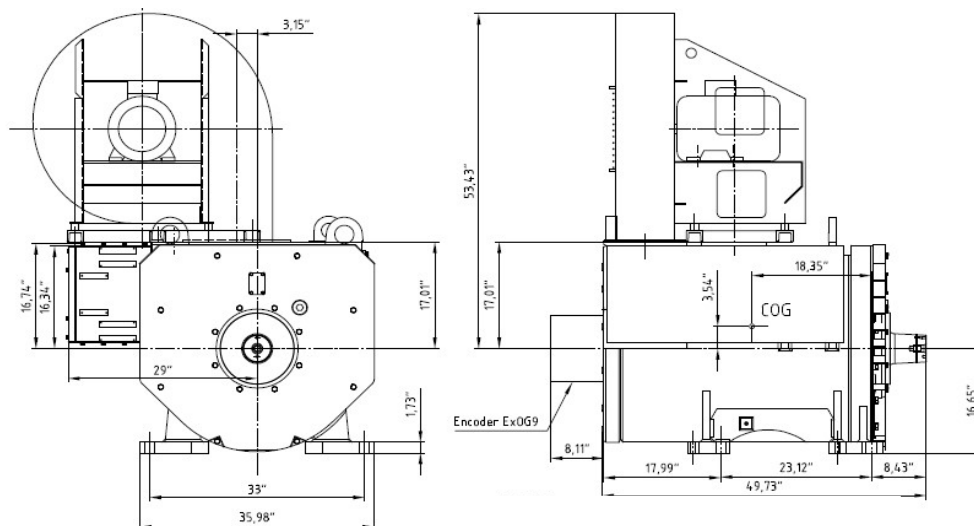
Performance 815hp (600kW)

	Continuous Rating	Intermittent Rating Temperature is only limit
Rated Volts (AC)	575-600	575-600
Rated Current (A)	740@690V or 850@600V	1220@690V or 1400@600V
Base Speed	800	800
With 600V VFD		
Speed@Rated HP (rpm)	800-1500	800-1060
HP (kW)	815 (600)	1220 (900)
With 690V VFD		
Speed@Rated HP (rpm)	800-1760	800-10600
HP (kW)	815 (600)	1220 (900)
Torque lb ft (Nm)	5281 (7160)	7921 (10740)
Speed @ Rated Torque	0 to 800	0 to 800
Max Speed (rpm)	3000	3000



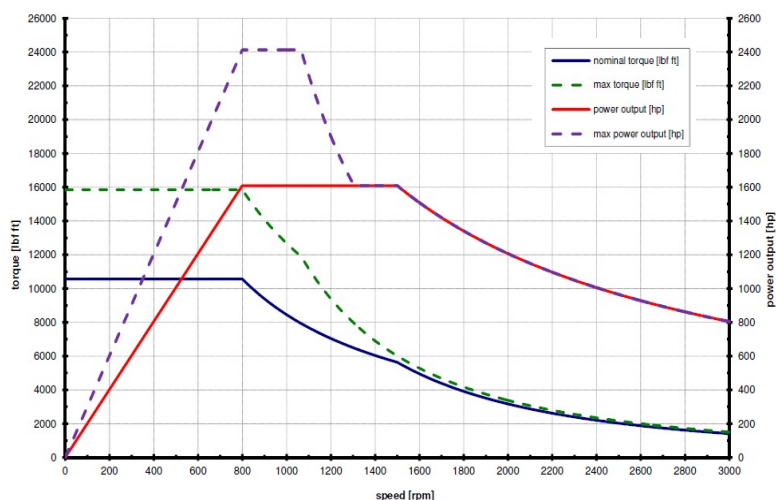
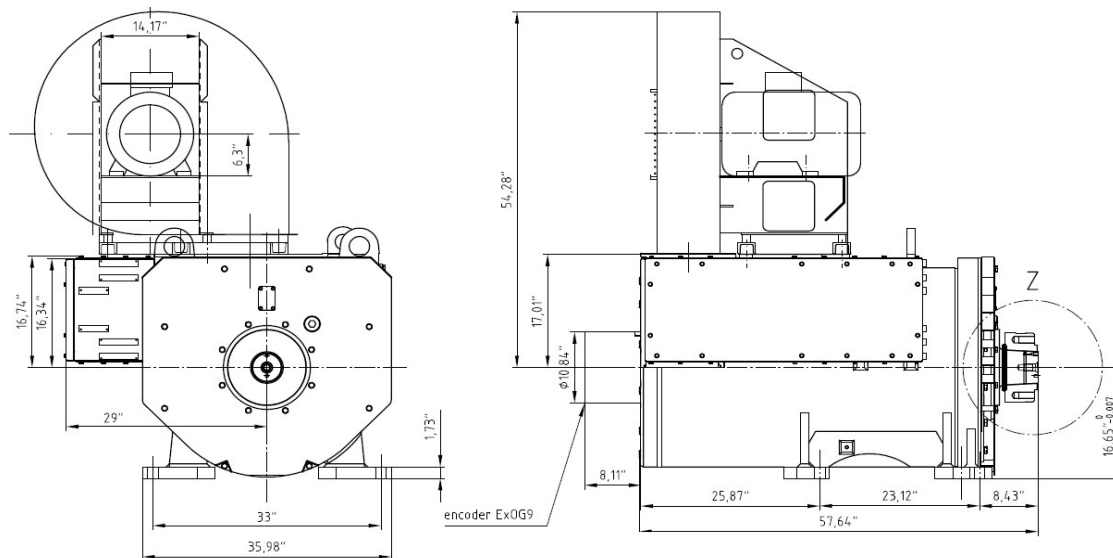
Performance 1150hp (860kW)

	Continuous Rating	Intermitted Rating Temperature is only limit
Rated Volts (AC)	575-600	575-600
Rated Current (A)	1060@690V or 1160@600V	1749@690V or 1910@600V
Base Speed	800	800
With 600V VFD		
Speed@Rated HP (rpm)	800-1760	800-1180
HP (kW)	1150 (860)	1725 (1270)
With 690V VFD		
Speed@Rated HP (rpm)	800-1760	800-1180
HP (kW)	1150 (860)	1725 (1270)
Torque lb ft (Nm)	7597 (10300)	11396 (15450)
Speed @ Rated Torque	0 to 800	0 to 800
Max Speed (rpm)	3000	3000



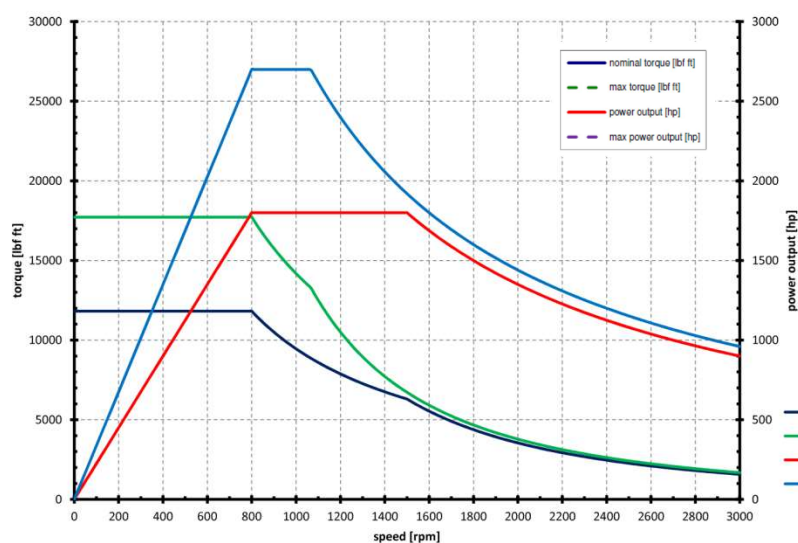
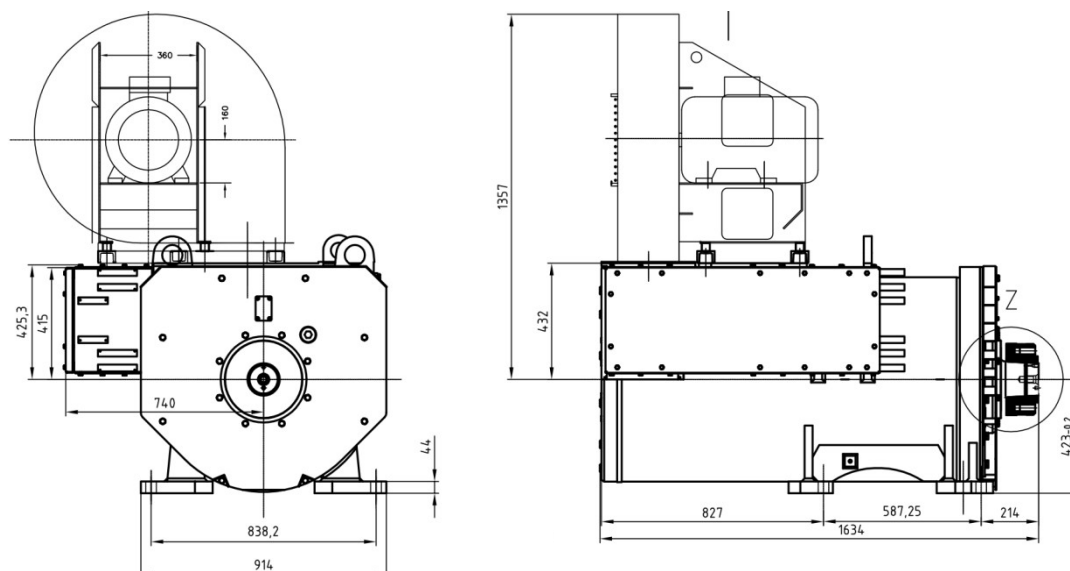
Performance 1600hp (1200kW)

	Continuous Rating	Intermitted Rating Temperature is only limit
Rated Volts (AC)	575-600	575-600
Rated Current (A)	1500@690V or 1640@600V	2470@690V or 2698@600V
Base Speed	800	800
With 600V VFD		
Speed@Rated HP (rpm)	800-1500	800-1070
HP (kW)	1600 (1200)	2400 (1765)
With 690V VFD		
Speed@Rated HP (rpm)	800-1500	800-1070
HP (kW)	1600 (1200)	2400 (1765)
Torque lb ft (Nm)	10566 (14325)	15850 (21490)
Speed @ Rated Torque	0 to 800	0 to 800
Max Speed (rpm)	3000	3000



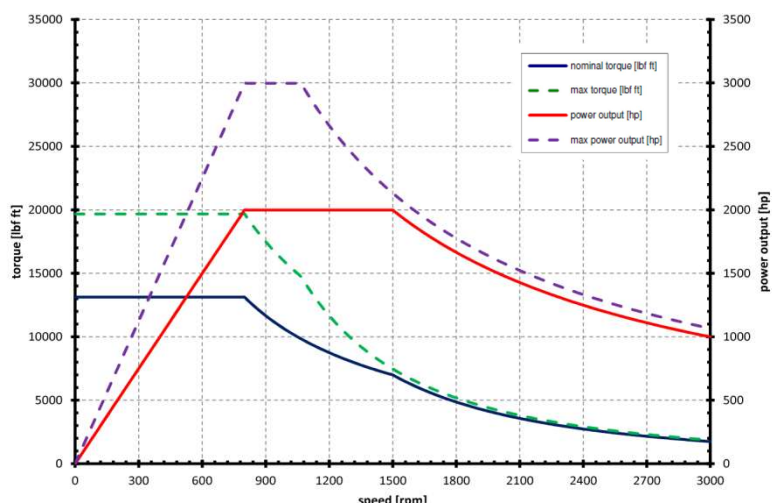
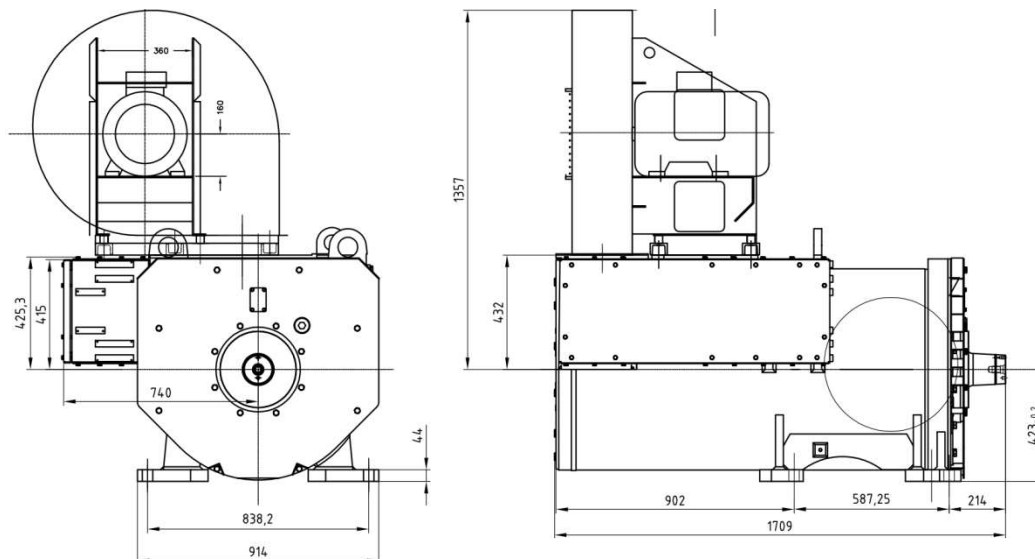
Performance 1800hp (1330kW)

	Continuous Rating	Intermitted Rating Temperature is only limit
Rated Volts (AC)	575-600	575-600
Rated Current (A)	1660@690V or 1820@600V	2656@690V or 2960@600V
Base Speed	800	800
With 600V VFD		
Speed@Rated HP (rpm)	800-1500	800-1060
HP (kW)	1800 (1330)	2700 (1995)
With 690V VFD		
Speed@Rated HP (rpm)	800-1500	800-1060
HP (kW)	1800 (1330)	2700 (1995)
Torque lb ft (Nm)	11816 (16021)	17725 (24032)
Speed @ Rated Torque	0 to 800	0 to 800
Max Speed (rpm)	3000	3000



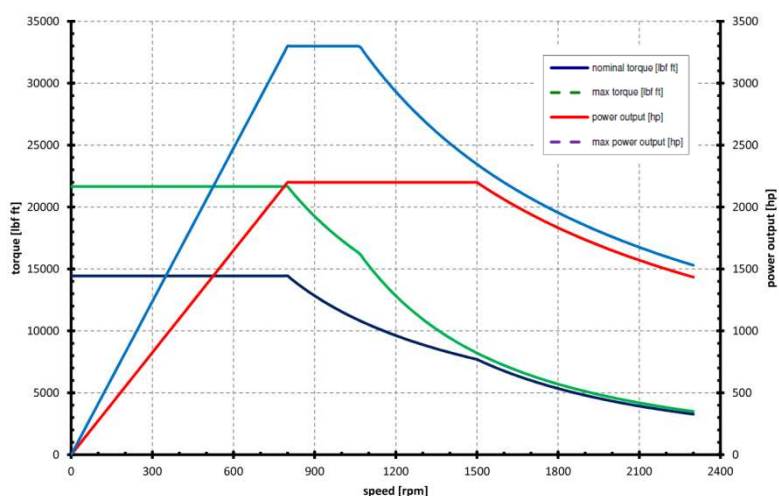
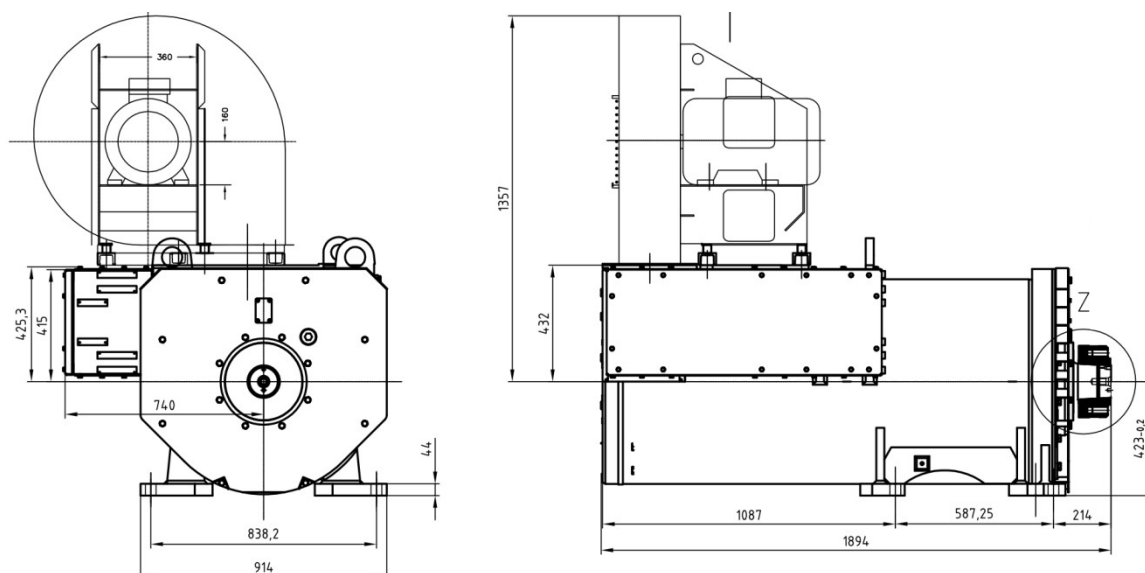
Performance 2000hp (1490kW)

	Continuous Rating	Intermitted Rating Temperature is only limit
Rated Volts (AC)	575-600	575-600
Rated Current (A)	1860@690V or 2035@600V	3069@690V or 3350@600V
Base Speed	800	800
With 600V VFD		
Speed@Rated HP (rpm)	800-1500	800-1060
HP (kW)	2000 (1490)	3000 (2235)
With 690V VFD		
Speed@Rated HP (rpm)	800-1500	800-1060
HP (kW)	2000 (1490)	3000 (2335)
Torque lb ft (Nm)	13120 (17788)	19679 (26682)
Speed @ Rated Torque	0 to 800	0 to 800
Max Speed (rpm)	3000	3000



Performance 2200hp (1640kW)

	Continuous Rating	Intermitted Rating Temperature is only limit
Rated Volts (AC)	575-600	575-600
Rated Current (A)	2045@690V or 2240@600V	3360@690V or 3687@600V
Base Speed	800	800
With 600V VFD		
Speed@Rated HP (rpm)	800-1500	800-1060
HP (kW)	2000 (1490)	3000 (2235)
With 690V VFD		
Speed@Rated HP (rpm)	800-1500	800-1060
HP (kW)	2200 (1640)	3300 (2460)
Torque lb ft (Nm)	14400 (17788)	21661 (26682)
Speed @ Rated Torque	0 to 800	0 to 800
Max Speed (rpm)	2300	2300



Optional features

- customization to your needs
- Ambient temperature -40°C up to +45°C
- ABS and DNV certification
- IP56 certified motor (TEWAC)
- Additional insulated drive end bearing
- Silencer for blower for 75dBA-1m
- New Oilfield Hub
- different Encoder and Encoder protection
- IP24 rain roof
- IP44 filter box solution
- Terminal box on top
- Offshore Paint (4 Layer)
- Onshore Paint (2 or 3 Layer)
- VFM (Variable Frequency Motor) blower, blower + VFD
- VFM (Variable Frequency Motor) motor, main motor + VFD
- Medium Voltage drilling motors