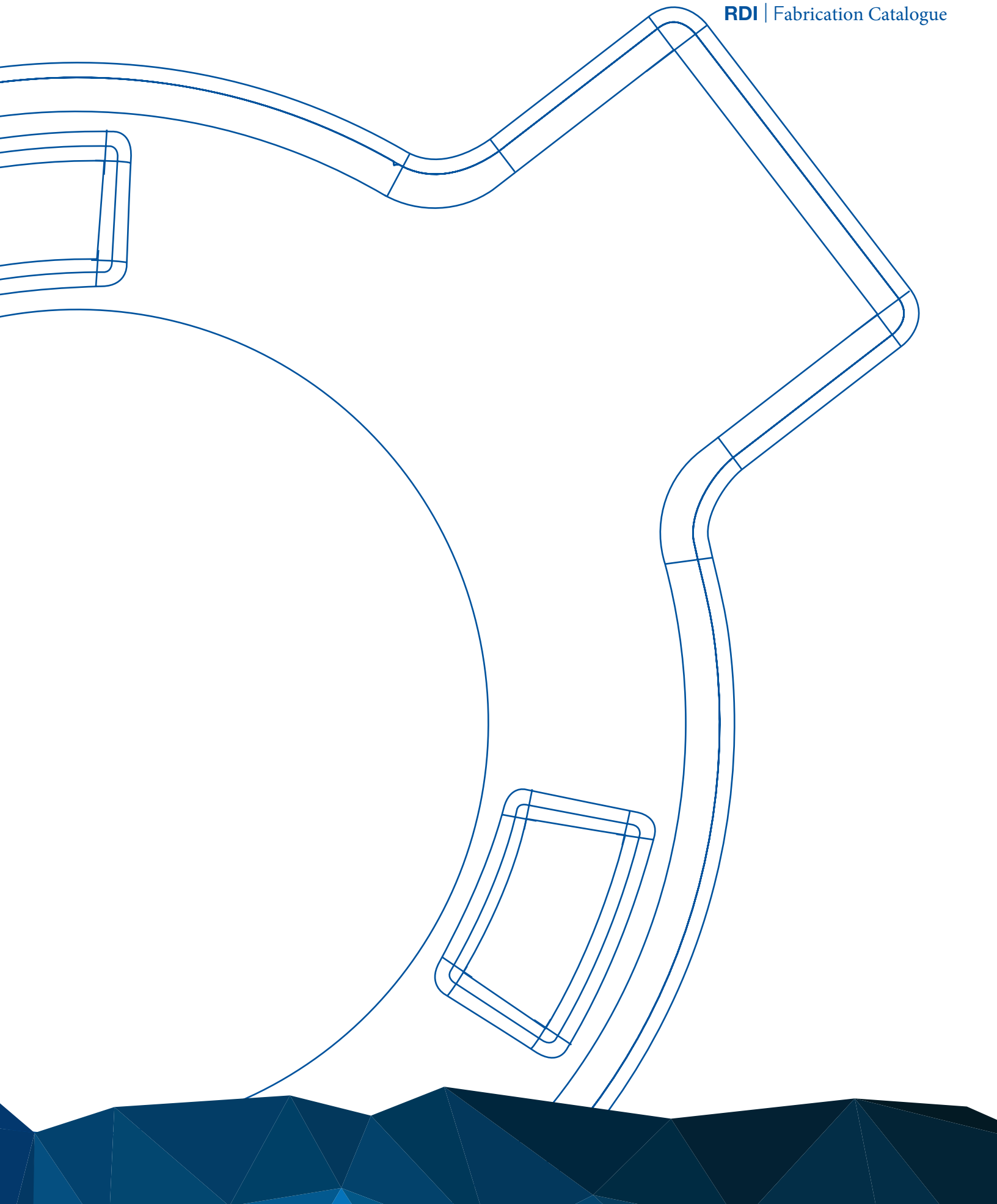




rdi

Fabrication Catalogue



About RDI

RDI is a North American manufacturer of high pressure and low pressure unionized piping and manifold systems, with headquarters in Alberta. RDI also offers full-service Inspection and Recertification facilities strategically located throughout Canada and the US. We provide our clients with product sales, custom design and fabrication services, and complete aftermarket service and support for all pressure pumping and flow control equipment.

RDI's Engineering and Design department utilizes the latest technologies in developing and maintaining product standards. RDI is proud to have achieved ISO certification and API licensing, standards critical to meeting our stringent quality objectives. In collaboration with Engineering and Design, RDI's Welding and Fabrication facility manufactures flowline packages, custom skids, and custom orders. Whatever the request, RDI makes it happen.

RDI's Inspection and Recertification facilities are located in Alberta, British Columbia, Pennsylvania, Colorado, North Dakota and Texas. All inspections and recertifications are completed by highly qualified technicians. Once tested, all equipment is entered into our Iron Management System, which allows clients to track asset service histories online.

At RDI, our mission is to provide new and existing clients with on time delivery of quality products and services while continually pursuing customer and employee excellence. When you choose RDI, you are working with the preferred North American manufacturer of flow control products, a company that provides unmatched equipment quality and reliability.



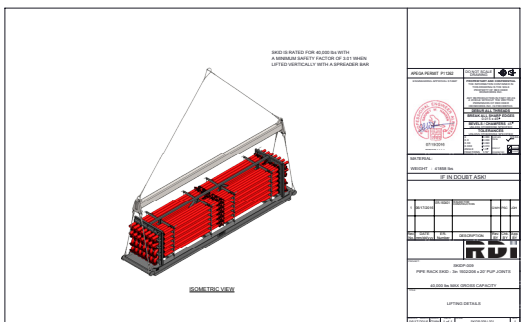
Table of Contents

- 4.** Welding, Engineering & Custom
- 5.** Test Separators
- 6.** Sand Separators
- 7.** High-Low Pressure Separators
- 8.** Wellhead Production Trees
- 9.** Flare Trailers

Welding, Engineering & Custom Fabrication

RDI's on-site Welding and Fabrication facility allows us to focus on customer requirements while utilization of the SMAW, GMAW and FCAW processes enable us to tackle almost any fabrication request with accuracy and efficiency. RDI produces low pressure flowline packages and fittings in various sizes and ratings. Along with that, RDI manufactures custom manifold and pipe skids – making us your one-stop-shop. RDI Oilfield Fabrication is a coded facility on the Western Slope carrying both **ASME {U}** and **NBIC {R}** stamp certifications, accreditations from the American Society of Mechanical Engineers and the National Board of Boiler and Pressure Vessel Inspectors, for the manufacture and repair of coded pressure vessels

- Custom manifold and pipe skids
- API Q1, ASME B31.1 pressure vessels and ASME B31.3 process piping certified
- Flare Stacks
- Sand Catchers
- Production Equipment
- Separators - High and Low Pressure



Test Separators

RDI Oilfield Fabrication separators come in a variety of sizes and pressure ratings:

Diameter:
12" up to 96"

Length:
4' up to 40'

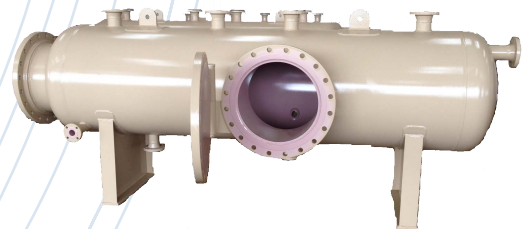
Pressure:
15 psi up to 250psi

* RDI Oilfield Fabrication offers vessels as high as 10,000 psi, although they are not classified as test separators.

In house Engineered **ASME** calculations. Top notch quality program and nationwide shipping allows RDI Oilfield Fabrication to compete in every E&P play in the US.

Provided with or without internal coating. It is imperative that the interior of the vessel be properly prepared for coating otherwise it will not last. We can offer standard test separators or custom depending on your needs.

RDI Oilfield Fabrication is a coded facility on the Western Slope carrying both **ASME {U}** and **NBIC {R}** stamp certifications, accreditations from the American Society of Mechanical Engineers and the National Board of Boiler and Pressure Vessel Inspectors, for the manufacture and repair of coded pressure vessels



Sand Separators

At RDI Oilfield Fabrication we offer standard and deluxe sand separators. Removable inlet diverters can be offered to help with costly repairs in the future. Lead time often times becomes the deciding factor when choosing which company to purchase from. Finding vessels readily available can happen, generally they are used. When fabricating a new vessel the longest lead time is the material. Once the material arrives the actual time spent on fabrication is a third of the overall production timeline. Here at RDI Oilfield Fabrication we maintain a little raw material stock at our facility to get a jump start in this ever changing market. At RDI Oilfield Fabrication we can design and build any 10k ASME compliant Sand Separator. Most companies offer API compliant Separators, API has less of a safety tolerance than ASME, therefore it is an unsafe unit. ASME is the industry leader and accepted vessel regulation agency. When you purchase a Sand Separator make sure you are getting a vessel that is -20F MDMT and 200F MAWT with a rating of at least 5,500 psi.

Sand Separator Models:

Available Pressures:

- 1,000 PSI
- 3,000 PSI
- 5,500 PSI
- 10,000 PSI

Available Diameters (dictated by pressure):

- 18"
- 20"
- 24"

Available Lengths:

- 8'
- 9'

RDI Oilfield Fabrication has optimized material selection and thickness within the ASME code boundary, to achieve maximum BBL Capacity at 20" diameter, compliant with both ASME/API.



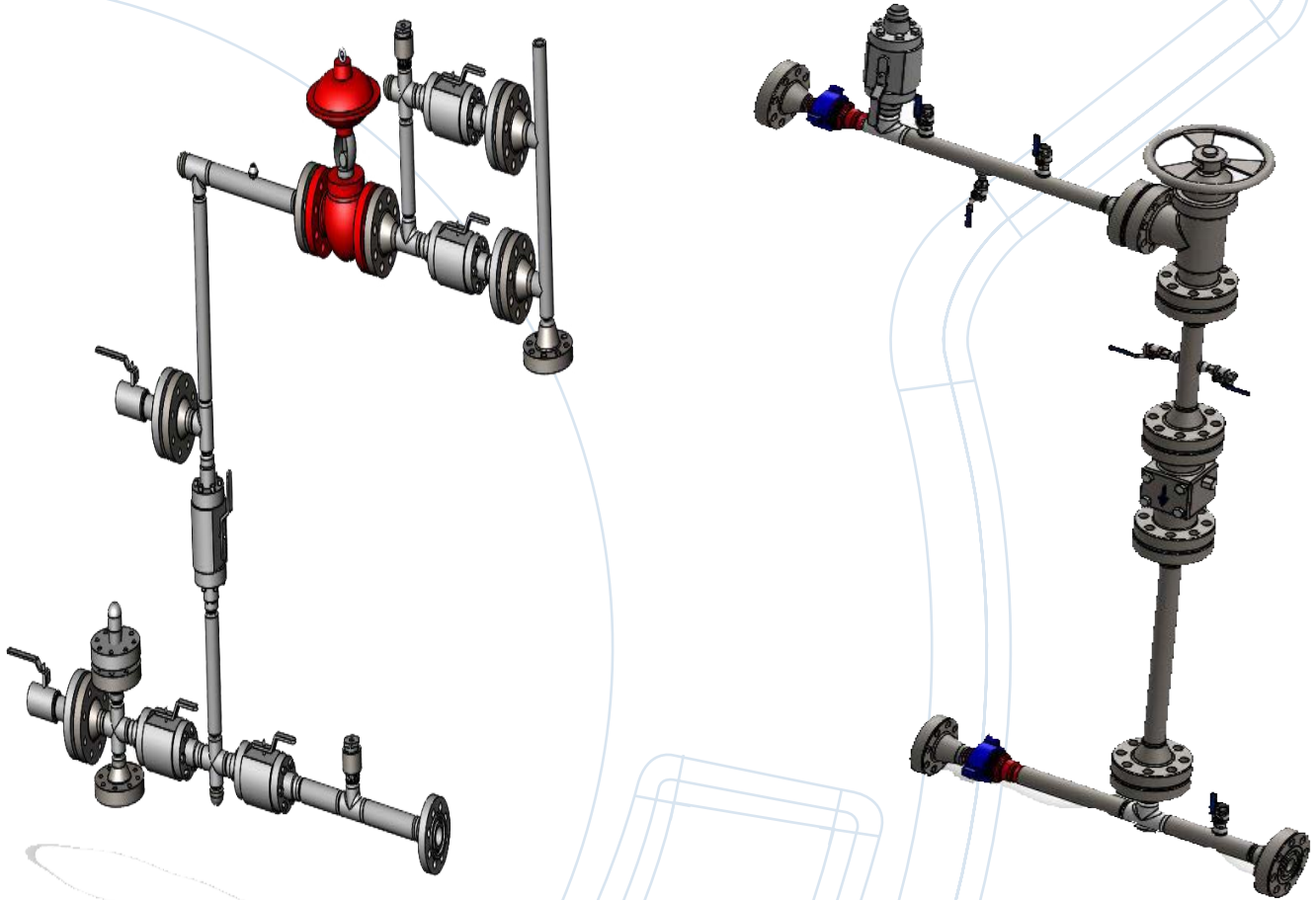
High-Low Pressure Separators

RDI Oilfield Fabrication also manufactures a full line of High-Low Pressure Separators that combine the benefits of a higher-pressure, two-phase separator with a lower-pressure, three-phase treater. At RDI Oilfield Fabrication we can engineer and produce a specific separator that meets your requirements or can build a unit based on your own designs.



Wellhead Production Trees

RDI Oilfield Fabrication designs and manufactures Wellhead Production Trees in all common industry sizes, pressure ratings and configurations. Our extensive inventory includes flanges, adaptors, valves, chokes and other products as required by the customer. RDI can also design and custom build any production tree to specific customer specifications.

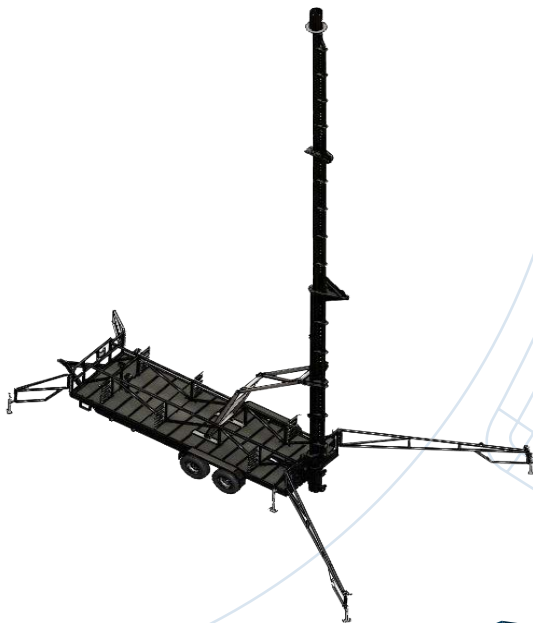


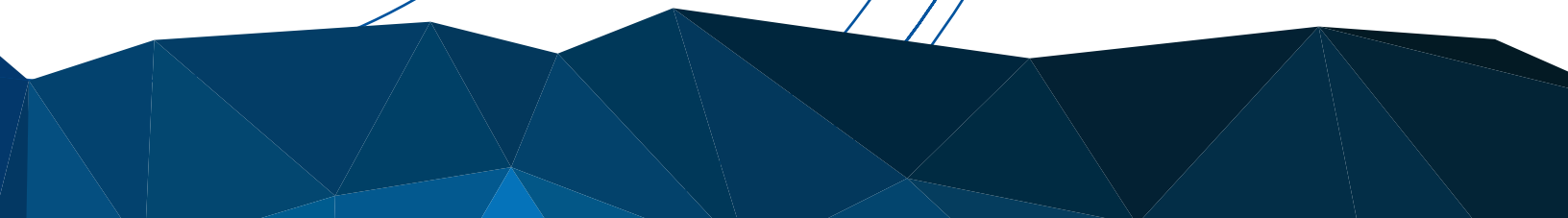
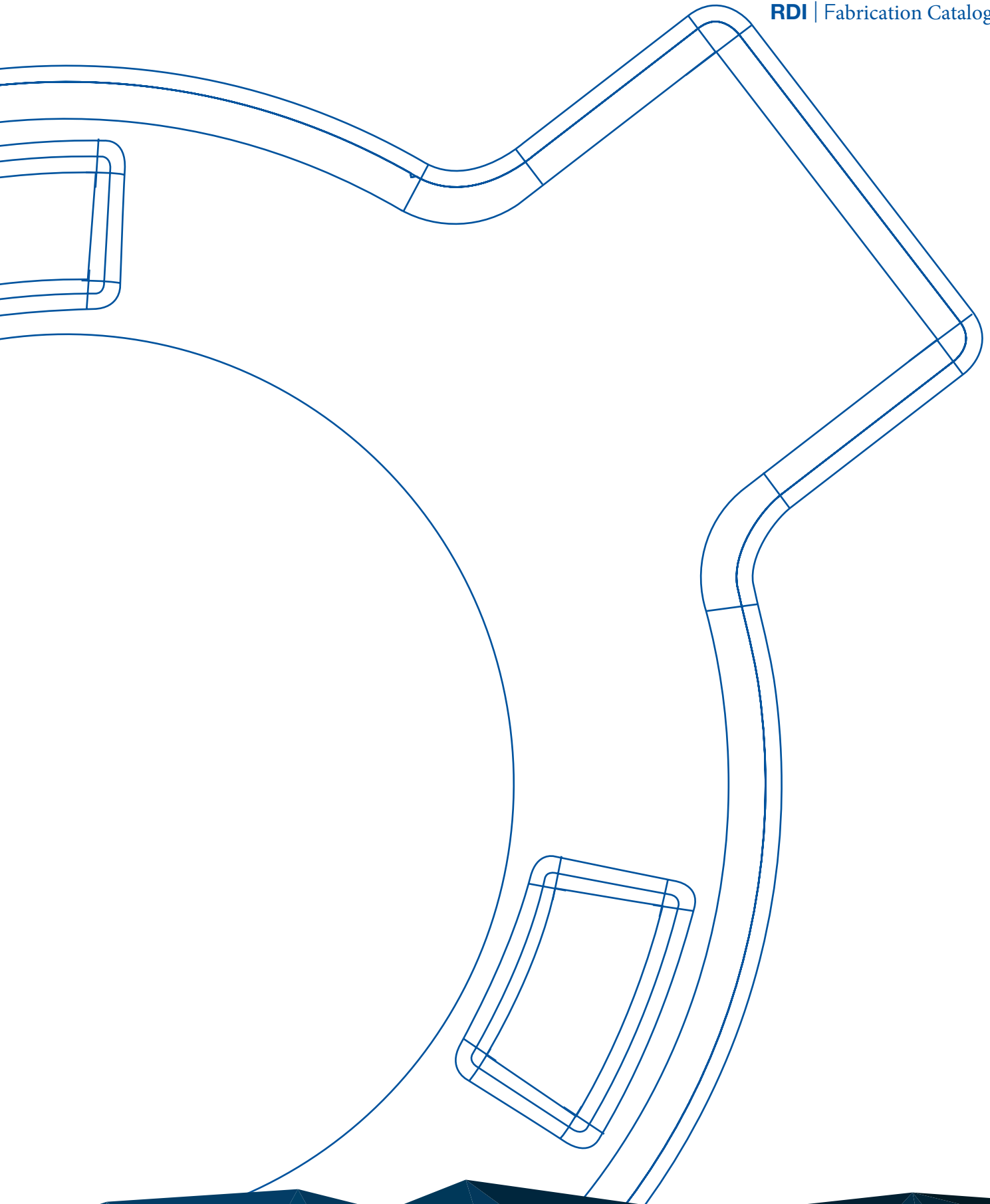
640 Professional Series Flare Trailers

All Pro Series flare trailers from RDI Oilfield Fabrication have a "QUAD-O" high efficiency rating and are both BLM and CFR 60.18 Compliant .

Specifications:

- ° Hydraulic Cylinder Raise True One Man Operation
- ° Metal Seal Gaskets
- ° 22' Trailer Allowing for Full 20' Pup Joints
- ° 40' and 60' Flare Stacks Available
- ° 6" | 8" | 10" | 12"
- ° Custom "Oilfield Tuff" Trailers
- ° Re-Enforced Frame
- ° Integral Cylinder Braces
- ° Steel Deck (No Fire)
- ° Pipe Racks 240' Pipe
- ° 120' @ 3" | 120' @ 4"
- ° High Clearance Axles
- ° ZERO-Ground Disturbance
- ° 3 Guy Wire Secured
- ° 12" Scrubber Pot Sized w/ Stack
- ° 2 - 100# Propane Bottle Racks
- ° ACL 3200 Ignition w/ Beacon
- ° Continuous Ignition
- ° Custom Logo Plates on Wings
- ° Name Logo and Number
- ° 14,000 GVWR
- ° Fully Loaded @ 10,000 LBS
- ° Empty @ 6,700 LBS
- ° 2 - 4" Flanged Inlet
- ° 1" Drain on Scrubber
- ° Electric ABS braking all 4 Tires
- ° Strategic Axle Location Allows for Safe Secure Handling in Tow
- ° 90 MPH Wind Load Certification
- ° Solar Panel and Batteries Operate Entire Unit With no Truck Cables
- ° Heavy Duty Support Wings





Locations



Red Deer, AB

Head office

6430 Golden West Avenue
Red Deer, AB T4P 1A6
1-403-343-1141

Fort St. John, BC

10147 Tundra Street
Fort St. John, BC V1J 4H6
1-250-785-0960

Minot, ND

300, 205 – 42 Street SE
Minot, ND 58701
1-701-838-1044

Frederick, CO

4289 Commerce Drive
Frederick, CO 80504
1-970-534-3570

Grande Prairie, AB

#6, 10602 – 79 Avenue
Clairmont, AB T0H 0W0
1-780-830-5474

Indiana, PA

127 Raymond Drive
Indiana, PA 15701
1-724-465-6280

Fruita, CO

1115 – 16 Road
Fruita, CO 81521
1-970-243-5500